

Clarion Area Chamber of Business & Industry  
21 North 6th Avenue  
Clarion, PA 16214

STD PRSRT  
US POSTAGE  
PAID  
PERMIT No. 20  
CLARION, PA 16214

The Clarion Area Chamber encourages Chamber members  
to do business with other Chamber members



# Table of Contents

Quick Glance at the Area.....	3
Attractions.....	3
Events.....	4
Summer Festivals, Fairs and Other Events.....	4
Fall Festivals and Attractions.....	5
Holiday Events.....	5
Places to See.....	6
Fitness & Athletics.....	8
Museums, Galleries, & Theatres.....	8
Outdoor Recreation.....	9
Biking.....	9
Bird Watching.....	9
Camping.....	10
Climbing.....	10
Map of Clarion County.....	11
Geocaching.....	12
Golfing.....	12
Hiking Trails.....	12
Horseback Riding.....	14
Hunting.....	14
On the Water.....	15
Boating.....	15
Canoeing and Kayaking.....	15
Parks.....	16
Tours.....	16
Places to Eat.....	17
Places to Stay.....	17
Places to Shop.....	18
Services.....	19

## Services

**API Autobody Products**  
1108 East Main Street  
Clarion, PA 16214  
814-226-4460



**ATM - Clarion Co. Com. Bank**  
592 Main Street  
Clarion, PA 16214

**ATM - Clarion Federal Credit Union**  
144 Holiday Inn Rd.  
Clarion, PA 16214

**ATM - Clarion Mall**  
22631 Route 68  
Clarion, PA 16214

**ATM - Community First Bank**  
601 Main Street  
Clarion, PA 16214

**ATM - Eagle Commons**  
Clarion University  
Clarion, PA 16214

**ATM - Eat'n Park**  
Route 68 & Perkins Road  
Clarion, PA 16214

**ATM - Farmers National Bank**  
6th Ave. & Wood St. - Clarion, PA  
8868 Route 338 - Knox, PA

**ATM - First United National Bank**  
400 Liberty Street - Clarion, PA  
Route 157 & Route 208 - Fryburg, PA  
224 Wood Street—New Bethlehem

**ATM - Loyal Order of Moose**  
401 Grand Ave.  
Clarion, PA 16214

**ATM - Northwest Savings Bank**  
97 W. Main St. - Clarion, PA  
730 Main Street - Clarion, PA  
629 Main Street - Rimersburg, PA  
1613 Bald Eagle Street - Sligo, PA

**ATM - PNC**  
800 Center - Clarion, PA  
Walmart Supercenter - Clarion, PA  
Main Street - Clarion, PA

**ATM - S&T Bank**  
410 Main Street - Clarion, PA  
628 Broad Street - New Bethlehem

**ATM - Wolf's Camping Resort**  
308 Timberwolf Run  
Knox, PA 16232

**Brett Whitling Photography**  
11227 Rt 322  
Shipperville, PA 16254  
814-902-1187



**Bright Ideas Learning Center & Photo.**  
11294 Rt 322  
Shipperville, PA 16254  
814-226-7804



**C-93 - 92.7FM and WWCH - 1300AM**  
814-226-4500



**Capstone Ministries**  
458 Simpson Road  
Corsica, PA 15829



**Cater Mama**  
P.O. Box 213  
Clarion, PA 16214  
814-297-8085



**Central Garage**  
738 South Street Rear  
Clarion, PA 16214  
814-226-7160

**Clarion Animal Hospital**  
22904 Route 68  
Clarion, PA 16214  
814-227-2603



**Clarion Beverage**  
9 North Fourth Ave.  
Clarion, PA 16214  
814-226-7031

**Clarion County Airport**  
395 Airport Road  
Shipperville, PA 16254  
814-226-9993



**Clarion County Farmers Market**  
1889 Brook Rd.  
Clarion, PA 16214  
814-227-8101



**Clarion Free Library**  
644 Main Street  
Clarion, PA 16214  
814-226-7172



**Clarion Hospital**  
One Hospital Drive  
Clarion, PA 16214  
814-226-9500



**Clarion River Rambler**  
697 McClain-Watson Rd.  
Shipperville, PA 16254  
814-226-4679



**Cook Forest Vacation Bureau**  
Cooksburg, PA 16217



**Exploreclarion.com**  
P.O. Box 174  
Clarion, PA 16214  
814-227-7045



**First Presbyterian Church**  
700 Wood Street  
Clarion, PA 16214  
814-226-8145



**First United Methodist Church**  
600 Wood Street  
Clarion, PA 16214  
814-226-6660



**Flower Center**  
22631 Rt 68 Ste 440  
Clarion Mall  
Clarion, PA 16214  
814-226-5470

**Flynn's Tire & Auto Service**  
305 West Main Street  
Clarion, PA 16214  
814-226-7290



**Gatesman Auto Body Carstar**  
28177 Route 66  
Lucinda, PA 16235  
814-226-9468



**IDA Wholesale**  
44 Circle Drive  
Shipperville, PA 16254  
814-226-5493



**Jeff's Performance Plus, Inc.**  
10760 Rt 322  
Shipperville, PA 16254  
814-226-6900



**Knox Fitness LLC**  
436 E Penn Ave  
Knox, PA 16232  
814-797-5975



**Liberty Street Church of God**  
240 Liberty Street  
Clarion, PA 16214  
814-226-8672



**MegaRock 105.5FM & 100.5FM**  
814-849-8100



**PA Great Outdoors Visitors Bureau**  
2801 Maplevale Road  
Brookville, PA 15825  
814-849-5197



**Phillips-Kifer Flowers**  
1405 East Main Street  
Clarion, PA 16214  
814-226-8460



**Pristine Nails & Spa**  
536 Main Street  
Clarion, PA 16214  
814-297-8069



**Q102 FM**  
801 East DuBois Ave.  
DuBois, PA 15801  
814-371-6100



**Sapphire Moon Healing Arts**  
21174 Route 322  
Corsica, PA 15829  
814-379-3085



**The Medicine Shop**  
100 Liberty Street  
Clarion, PA  
814-226-9310



**Unique Salon**  
1318 East Main Street  
Clarion, PA 16214  
814-227-2333



**Wensel Enterprise (Car Wash)**  
1731 Front Street  
Sligo, PA 16255  
814-745-3200



**ZION Church**  
114 Zion Road  
Clarion, PA 16214  
814-745-2814



## Places to Shop

**84 Lumber**  
185 N. Point Dr.  
Clarion, PA 16214  
814-226-8434



**Advanced Furniture Solutions**  
121 West Park Avenue  
DuBois, PA 15801  
814-372-2222



**B'ewe'tiful Knits Yarn Boutique**  
22586 Route 68  
Clarion, PA 16214  
814-229-1598



**Blake Brothers Carpet & Furniture**  
1369 East Main Street  
Clarion, PA 16214  
814-226-7847



**Briar Hill Rustic Furniture**  
4169 Route 36  
Leeper, PA 16233  
814-744-9913



**Clarion Computer**  
521 Main Street  
Clarion, PA 16214  
814-226-7654



**Clarion Mall**  
22631 Route 68  
Clarion, PA 16214  
814-226-4433



**Clarion University Book Center**  
Gemmell Complex  
Clarion, PA 16214  
814-393-2696



**Comet Food Warehouse**  
443 South Fifth Avenue  
Clarion, PA 16214  
814-226-4250

**Corle Benn Auto Parts, Inc.**  
712 E Main St.  
Clarion, PA 16214  
814-226-8540

**Dan Estadt's Sports**  
527 Main Street  
Clarion, PA 16214  
814-226-4871



**Dan Smith's Candies & Gifts**  
612 Main Street  
Clarion, PA 16214  
814-227-2255



**Deer Creek Winery**  
3333 Soap Fat Rd.  
Shippensburg, PA 16254  
814-354-7392



**F.L. Crooks Clothing Company**  
Main Street  
Clarion, PA 16214  
814-226-8020



**Fallers Furniture**  
624 Main Street  
Clarion, PA 16214  
814-223-4600



**Fikes Music LTD**  
51 Stoney Lonesome Road  
Clarion, PA 16214  
814-745-2201



**Foxburg Wine Cellars**  
P.O. Box 349  
65 Main Street  
Foxburg, PA 16036  
724-659-0021



**Freedom Wireless**  
Clarion Mall  
22631 Route 68  
Clarion, PA 16214  
814-227-2682



**Fulmer House**  
703 Wood Street  
Clarion, PA 16214  
814-226-5969



**Ida Wholesale**  
44 Circle Drive  
Shippensburg, PA 16254  
814-226-5493



**J.C. Penney Company, Inc.**  
22631 Route 68, Ste 10  
Clarion, PA 16214  
814-226-9160



**James Jewelers**  
614 Main Street  
Clarion, PA 16214  
814-226-8711



**Maurices**  
22631 Route 68  
Clarion, PA 16214



**Medfast Pharmacy**  
22361 Route 68 Ste 250  
Clarion, PA 16214  
814-226-6664



**Once Again Consignment**  
10827 Rt. 322  
Shippensburg, PA 16254  
814-226-7565

**POGO (Pre-owned Goods Outlet)**  
34 S 5th Avenue  
Clarion, PA 16214  
814-223-9000

**Red Bandana Winery LLC**  
265 Allio Drive  
Leeper, PA 16233  
814-744-9631

**Riverhill Battery Warehouse**  
11041 Route 322  
Shippensburg, PA 16254  
814-227-2123



**Seven Seas Home & Leisure**  
3 Hospital Dr.  
Clarion, PA 16214  
814-226-7428



**Sherwin-Williams Co.**  
326 Main Street  
Clarion, PA 16214



**Staples, Inc.**  
Route 68 & Perkins Road  
Clarion, PA 16214  
814-223-9581



**The Bathtub & Kitchen Sink**  
604 Main Street  
Clarion, PA 16214  
814-226-7080



**The Simple Things**  
22631 Rt 68  
Clarion Mall  
Clarion, PA 16214

**Tractor Supply Co.**  
26 Commerce Rd.  
Clarion, PA 16214  
814-227-2580



**Victorian City Art & Frame**  
1273 Liberty Street  
Franklin, PA 16323  
814-437-9509



**Walmart Supercenter**  
63 Perkins Road  
Clarion, PA 16214  
814-226-0809



**Weaver Auto Parts**  
P.O. Box 320  
8685 Rt 322  
Shippensburg, PA 16254  
814-782-3014

**Wein's**  
622 Main Street  
Clarion, PA 16214  
814-226-7401

## Quick Glance at the Area



outdoor adventure.

The Clarion Area and Clarion County in general is a beautiful part of Pennsylvania and a great place to spend time with family, with friends, or just a quiet day alone. It's the perfect place to spend a few hours, or to start an

Clarion County is home to thousands of acres of forestland, the most distinct being found in Cook Forest State Park. The Clarion River cuts through the heart of the Clarion County landscape. You can also find fish-filled lakes, streams, and ponds, scenic overlooks, many forms of wildlife, and numerous historic landmarks to be discovered and enjoyed.



Clarion County is also home to Clarion University, one of the fourteen universities in the Pennsylvania State System of Higher Education and founded in 1867. While you're visiting, be sure to check out the schedule of special events and presentations happening at the university where you can find plays, concerts, sporting events, recreation, and more.



while you interact with our friendly residents and shop owners and take in the charm of our beautiful small-town Pennsylvania landscape and atmosphere.

The Clarion County landscape is filled with forest-covered hills and mountains, which make it a very scenic area especially in the autumn. In fact, this breathtaking changing of the seasons lends it name to Clarion's own Autumn Leaf Festival, a 9-day festival celebrated every year throughout the town and surrounding area, and coinciding with Clarion University's homecoming football game.



While you're in the area, be sure to watch for other fun-filled festivals, craft fairs, flea markets, car and bike cruises, delicious wineries, historical reenactments, and many other small-town celebrations, events, and area happenings. We are sure you will discover Clarion County as a great place to spend 4 hours, 4 days, or forever.

## Attractions

### Deer Creek Winery

Located about 10 minutes from Clarion and nestled among the trees on Soap Fat Road in Shippensburg, PA their specialty is a raspberry wine made from fruit grown on their local adjoining farm. Deer Creek is a wine lover's paradise with a variety of young wines crafted to please anyone's taste. Although their main winery is in Shippensburg, you can also visit their Clarion Mall location to purchase their wines and other merchandise.



### Kalyumet Fore Fun

A family entertainment center offering a miniature golf, redemption arcade, a large heated pool, pizza, ice cream and other snacks, Kalyumet Fore Fun is part of Kalyumet Camping and Cabins. Kalyumet is an Indian term for the word "welcome" and that is how they want you to feel when you visit. This is one of the newest attractions that offers fun for all ages. The miniature golf course features a large waterfall, water hazards, and a fountain pond. So visit for the afternoon or spend the night at the campground. Either way, you are sure to have a great time with the family.



### Paul's Pumpkin Patch

Specializing in pumpkins, gourds, Indian corn, squash and corn shocks. Pick your own pumpkins. Shop for fall decorating items. Take a hayride. Visit the petting zoo. Watch a demonstration of the Frogtown Flinger pumpkin launcher. Have lunch at the Pumpkin Patch Café. Check out their numerous weekend events that include music, crafts, family entertainment and more. On weekends in October, take a "Not Too Scary Nighttime Hayride". School groups are welcome. Located just 1 mile off Route 66 at Frogtown.





# Events

## Summer Festivals, Fairs and Other Events

### Leeper Flea Market

Leeper Flea Market is an outdoor market with 60-100 dealers. It is located at the junction of Routes 66 and 36. Offering antiques, collectibles, crafts and new & used merchandise. Open Saturdays and Sundays from mid-April through mid-October, dawn til dusk.

### Clarion County Farmers Market

Clarion County Farmers Market was established in 1986, and is a local producers market. Merchants offer a wide variety of produce, fruit, meat, eggs, baked goods, jams and much more. It is located in Clarion in the parking lot next to the courthouse, right off Main Street. Open Saturdays from May - October, 8:30 am til Noon.

### Knox Farmers Market

Knox Farmers Market is a seasonal farmers market held every Friday from May through October, 4 - 7 pm. It is located in the Knox Community Park and offers produce, vegetables, arts, crafts and more. All items are handmade or locally grown.

### New Bethlehem Farmers Market

New Bethlehem Farmers Market offers locally grown produce and baked goods from area farmers and community organizations. It is located in Guntown Park in New Bethlehem, Pa and is open every Friday, mid May through October, from 2:30 - 5:30 pm.

### Music & Arts Festival and Fireworks in Guntown Park

This is an annual music and arts festival each July 2nd in New Bethlehem, Pa featuring live music, arts and craft vendors, and more. The fireworks display is held along the banks of Redbank Creek.

### Women's Healthcare of Clarion I Love Clarion sponsored in part by Pennsylvania American Water

I Love Clarion is a celebration of community and our nation's independence featuring a live concert, a community talent show, and fireworks. The celebration occurs each July 3rd in Clarion, Pa at the Clarion University Memorial Stadium. For more information, contact the Clarion Area Chamber of Business & Industry at (814) 226-9161 or events@clarionpa.com

### St. Joseph's Annual 4th of July Celebration

This festival features many games, booths, bingo, Chinese auction, country store, musicians, concession stand, children's playground, and more. Also featured at the festival are their traditional "all you can eat" chicken and ham dinners. The festival is held rain or shine each July 4th and is located on the Parish Grounds just off Route 66 in Lucinda, Pa.

### East Brady Riverfest

Held the third weekend of July in East Brady, Riverfest features entertainment all weekend, a parade, fireworks, an auction, games, food & craft vendors, live music and more. The festival can be found along the scenic Allegheny River on Route 68 just 20 miles south of Clarion at Graham Field on Verner Street.

### Clarion County Fair

The Clarion County Fair is an agricultural event that also includes a midway, amusement rides, a circus, demolition derbies, a stunt show, tractor pulls, a draft horse pull, a 4-H livestock sale, live entertainment, stage shows and more. The fair is held in late July at Redbank Valley Municipal Park in Alcola, Pa on Route 28 North, just 1.5 miles from New Bethlehem, Pa.

### Rimersburg Cookie Daze

Cookie Daze is an annual festival that takes place the second weekend of August. It features a parade, fireworks, cart races, a kiddies parade, a car cruise, a motorcycle rally, crafters, food, rides, live bands, and more. The festival is located on Main Street in Rimersburg, Pa just 15 miles south of Clarion.

### Foxburg Scottish Festival

This festival is held during the third weekend in August at the Riverstone Farm in Foxburg, Pa. Included in the festival is an open air Ceilidh on the lawn outside Lincoln Hall in Foxburg. Activities at the festival include Scottish music, athletic demonstrations, traditional Scottish food, sheep dog trials, Scottish vendors, Scottish clan booths, and more.

### Knox Horse Thief Days

Horse Thief Days is held annually during the last week of August on Main Street in Knox, Pa. This festival features a car cruise, food vendors, arts and crafts, sidewalk sales, bingo, lawnmower races, a fireman's parade, music, fireworks and more.

# Places to Eat

**6th & main market**  
600 Main St.  
Clarion, PA 16214  
814-226-6963



**Applebee's**  
22296 Route 68  
Clarion, PA 16214  
814-226-7590



**Clarion Pizza Hut**  
22566 Route 68  
Clarion, PA 16214  
814-226-0600



**Cozumel Mexican Restaurant**  
24 United Drive  
Inside Quality Inn  
Clarion, PA 16214  
814-226-8575

**Eat'n Park**  
Rote 68 & Perkins Road  
Clarion, PA 16214  
814-227-2189



**Gateway Lodge**  
14870 Route 36  
Cooksburg, PA 16217  
814-744-8017



**K B & B Dugout**  
15444 Route 322  
Clarion, PA 16214  
814-764-6327



**McDonald's**  
136 Perkins Road  
Clarion, PA 16214  
814-226-5763



**McDonald's**  
707 Main Street  
Clarion, PA 16214  
814-226-4072



**Michelle's Café**  
611 Main Street  
Clarion, PA 16214  
814-227-2688



**Perkins Family Restaurant**  
78 Perkins Road  
Clarion, PA 16214  
814-226-4410



**RRR Roadhouse**  
22631 Route 68  
Clarion, PA 16214  
814-227-2000



**Shreffler's Snack Shack**  
1552 Route 322 Box 21  
Kossuth, PA 16331  
814-797-1601



**The Meadows**  
22671 Route 68  
Clarion, PA 16214  
814-226-6677



**Trails End Restaurant**  
2738 Forest Road  
Cooksburg, PA 16217  
814-927-8400



**Wendy's**  
38 8th Avenue  
Clarion, PA 16214  
814-226-5941



# Places to Stay

**Comfort Inn**  
129 Dolby Street  
Clarion, PA 16214  
814-226-5230



**Cook Forest Top Hill Cabins**  
2808 Forest Road  
Cooksburg, PA 16217  
814-927-6922



**Cook Riverside Cabins**  
115 Riverside Drive  
P.O. Box 109  
Cooksburg, PA 16217  
814-744-8300



**Gateway Lodge**  
14870 Route 36  
Cooksburg, PA 16217  
814-744-8017



**Hampton Inn**  
4 Hospital Drive  
Clarion, PA 16214  
814-226-4444



**Holiday Inn**  
45 Holiday Inn Road  
Clarion, PA 16214  
814-226-8850



**Kalyumet Camping & Cabins**  
8630 Miola Road  
Lucinda, PA 16235  
814-744-9622



**Quality Inn & Suites**  
24 United Drive  
Clarion, PA 16214  
814-226-8682



**Super 8 Motel**  
135 Hotel Dr.  
Clarion, PA 16214  
814-226-4550



**The Clarion House**  
77 South Seventh Avenue  
Clarion, PA 16214  
814-226-4996



**The Foxburg Inn**  
20 Main Street  
Foxburg, PA 16036  
724-659-3116



**Wolf's Camping Resort**  
308 Timberwolf Run  
Knox, PA 16232  
814-797-1103



## Parks

### Clarion County Park

Clarion County Park is located along Route 66 just a few miles south of where it intersects with Route 322, just a few miles west of Clarion. The park offers picnic shelters with charcoal grills, a large playground that includes baby swings, a sand volleyball court, basketball courts, a soccer field, toilet facilities, a baseball field, a Children's Garden and large parking areas. All areas are clean and in good repair.

### Clarion County Veterans Memorial Park

This park is just across the street from the Clarion County Courthouse. The park includes a large gazebo plus the Clarion County Veterans Monument, the Civil War Memorial, the WWII Memorial, the Korean War Memorial, the Vietnam Veterans Memorial, and the POW/MIA Marker. There are benches available year round and water fountains available in the summer months. Different types of entertainment are highlighted in the gazebo throughout the year.

### Farmington Township Community Park

This is a newer park in Clarion County located on Route 36 just outside Leeper, Pa. This 118 acre park was planned to be a landfill, but with the help of the Pennsylvania DCNR, local residents were able to purchase the land and build this park. The park contains playground equipment, a paved walking trail and a baseball field.

### Gemmell Park

This is a small park within Clarion University campus. It's a great place for students to be able to get outside and eat their lunch or just enjoy the sunshine between classes. There's a small rotunda with benches available and wheelchair accessible.

### Redbank Valley Municipal Park

This park is located just 2.8 miles north of New Bethlehem, Pa on Route 28. The 60 acre community park is nestled in a partially wooded area just a few hundred feet from the Redbank Creek. The Redbank Valley Municipal Park is host to several community events that include the Clarion County Fair and a bluegrass festival among others.

## Tours

### Colony Homes

Colony Tours for perspective home customers can be prearranged by contacting any Colony retailer. Find their locations on their website at [www.colony-homes.com](http://www.colony-homes.com). They also try to cater to interested groups or individuals on a one-on-one basis. A seven to ten day advance request must be made for a tour. The general tour lasts approximately one hour and is an overall view of how they build homes on an assembly line and the finishing of drywall in their separate drywall building. They try to educate individuals as to the flow of material and personnel on a production line and the advantages to site-built homes, which eventually relate to cost savings. Groups larger than eight people will be taken through in smaller groups so that they can hear in the plant. Those allergic to dust or sensitive to loud construction noise are cautioned about taking the tour.

### Golden Living Center - Clarion

Golden Living Clarion is prepared to give tours 24/7. If you want a planned tour, call Lyn Nesbitt at 814-226-6380. They can provide a meal of lunch or dinner for their touring guests if it is planned. See their state-of-the-art rehabilitation center with their state-of-the-art therapy department. The Aviary is also another tour stop, as well their our beautiful personal care facilities.

### Lavender Green

Lavender Green offers tours of their farm from June until September. The tour is 2 hours in length and includes lavender refreshments, a garden tour with Q & A, a craft demonstration and shopping. The fee is \$20 per person and includes a \$5 gift certificate for shopping. Groups of 10 or more may chose their own date and time. Individuals can join their public tours one Wednesday every month from 10 until Noon. Public tour dates are: June 13rd, July 18th, August 15th and September 19th and reservations are required. Interested parties may telephone 814-797-5117 or e-mail [lavendergreenco@aol.com](mailto:lavendergreenco@aol.com) to book a reservation. There are no activities for young children. They also have brochures in tourist information locations for more details.



## Fall Festivals and Attractions

### Art in the Park

This annual art festival is held the Sunday after Labor Day at Guntown Park in New Bethlehem, Pa. The festival includes hay rides, all-day entertainment on stage, art and craft displays, food, and more. The artwork submitted by area artists for display features work in oil, acrylics, water colors, photography, crafts, and many other media.

### Peanut Butter Festival

This annual festival, held the second weekend after Labor Day, celebrates the town being the home of peanut butter products with the Smuckers name. The festival features rides, sidewalk sales, crafters, vendors, a carnival, bingo, a bike race, a 5k run, parade, music, food and more. The festival is held in Guntown Park in New Bethlehem, Pa.

### The Farmers National Bank Autumn Leaf Festival™

This nine-day festival held in Clarion features a wide variety of activities including a huge craft show and sale, an award-winning parade, an automotive light and sound competition, car cruise, community and university cultural nights, tractor show and more. This is a festival not to miss. For more information, visit the Clarion Chamber website at [www.clarionpa.com](http://www.clarionpa.com).

### Foxburg Festival

This annual festival takes place the first weekend in October in downtown Foxburg, Pa. The festival features arts and craft vendors, food vendors, door prizes and drawings, old-fashioned grape stomping, canoeing on the Allegheny River and more.

## Holiday Events

### A Christmas Present

This annual event held the first weekend in November is a craft show and sale held in private homes, local churches and businesses in the Rimersburg, Pa area. It features hand made crafts, baked goods, and hot meals. All participating locations are decorated for the holidays. The locations can be found by looking for a sign in the shape of a Christmas present in the yard of each location.

### Home for the Holidays

This annual event is held the first weekend in November in conjunction with the A Christmas Present event. The Home for the Holidays locations can be found in Sligo, Pa and are located by looking for a sign in the shape of a shamrock wearing a Santa hat in the yard of each location. Like the A Christmas Present event, this show features arts, crafts, gifts, and hand-crafted items for sale at various homes and businesses throughout the area.

### Gingerbread Tour

This annual tour is held the first weekend in November in various locations including the Cook Forest area. It features tours of unique and specialty shops, antiques, quilting items, quality handmade crafts and more, and can be found in crafters homes, at an herb farm, and at artist galleries. Refreshments are served at most locations.

### Once Upon a Christmas

This holiday open house event throughout the town of Knox, Pa is held the third weekend in November. It features crafts, decorating items, gifts, food and entertainment throughout crafters' shops, homes, and local businesses.

### Christmas Parade and Party in Clarion

The Christmas Parade and Party is held in November in downtown Clarion. The parade features local bands and other groups dressed for the holidays to celebrate the beginning of the holiday season. The party features crafts and games for the kids as well as a visit with Santa. Free carriage rides are also available.

### Clarion County Festival of Trees

This annual festival is held the first weekend in December at St. Joseph Social Hall in Lucinda, Pa. The festival features more than 40 decorated live trees, crafters and vendors displaying their unique and handcrafted items, a bake sale, raffle, Chinese auction, entertainment for all ages and more.

### New Bethlehem Christmas Parade and Snack with Santa

This annual parade and visit with Santa kicks off the holiday season on the first weekend of December in New Bethlehem, Pa. The parade is held on Broad Street and the kids can visit Santa at the New Bethlehem Fire Hall.

### Snowman in the Forest

This day of fun and wintry activities is held every February throughout the Cook Forest State Park area in Cooksburg, Pa. Various activities are held at the ice skating pond at River Road including the Free Chili Cook Off event, hot chocolate, coffee, and a warming hut. Of course, there are also plenty of snow-related activities happening as well as a snowman-building contest held throughout the area.

## Places to See

### Brady's Bend Overlook

(40° 59'17"N 79° 34'58"W)

Also called "The Narrows" by the locals, the Brady's Bend Overlook is a spectacular 1,500 foot panoramic view of the magnificent bend in the Allegheny River. In the 70's and 80's, hang gliding was a popular attraction from this site, but due to safety concerns, it became prohibited in the mid to late 80's. Located along Route 68W, just 20 miles south of Clarion, the view is particularly breathtaking in the Autumn when the leaves are at their finest.



### Buchanan Furnace

(41° 07.947'N 79° 33.468'W)

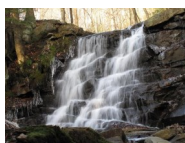
Buchanan Furnace was built in 1842 and produced an average of 1200 tons of iron per year until timber depletion caused its closing in 1858. To find it, travel north from Callensburg on PA58. After crossing the Clarion River, turn left into a private lane (please get permission). Travel about 500 feet back this lane until you come to a roped off area to the right named Sleepy Hollow. Park there. Walk up the open glade area to the northeast about 100 yards to the furnace on your right. This is the most preserved furnace in Clarion County.



### Buttermilk Falls

(Park at 41° 4.168'N 79° 39.134'W)

Buttermilk Falls is a beautiful set of waterfalls that drops approximately 30 feet in a roaring cascade. It is a sight that many locals outside the immediate area do not know exist. To get there, from Parker, Pa take PA-368 east then turn onto Terwilliger Road. This will then turn into Bartow Road. At this point be careful. If you do not have a 4-wheel drive or off-road vehicle you may need to park at the coordinates listed above. Continue down the hill until the road comes to a Y. Take the road on the right and continue until you can hear the sound of the falls and then follow the sound.



### Clarion County Courthouse

(41° 12'55"N 79° 23'09"W)

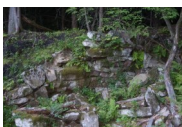
The Clarion County Courthouse is listed in the National Register of Historic Places. The first courthouse was built in 1843 at the present site. The current courthouse is actually the third courthouse at this location and was built in 1884. It is just over 78 feet tall and 134 feet deep, with a tower steeple reaching 213 feet tall with a clock on all four sides and a statue of "Lady Justice" with her scales on the top. The Courthouse is the center of government for Clarion County. You can find the courthouse on the corners of 5th Avenue and Main Street in the heart of downtown Clarion, Pa.



### Clarion Furnace

(41° 14.124'N 79° 23.091'W)

The Clarion Furnace was built in 1828 on Toby Creek in Paint Township, was the first furnace built in Clarion County, and was the pattern upon which future furnaces were constructed. It was abandoned in 1852 due to financial problems. It was a cold blast, water powered charcoal furnace that produced Close Gray Iron. There is not much left of the furnace, just a few piles of rocks and some charcoal, but it is an important part of Clarion County history and definitely a stop for history buffs.



### Cook Forest Memorial Fountain

(41° 20.800'N 79° 13.031'W)

The Cook Forest Memorial Fountain was built in 1950 on the Longfellow Trail and currently part of the North Country Trail. It was dedicated to the members of the original Cook Forest Association, the group that was instrumental in raising additional funds needed to purchase the land that is now Cook Forest State Park. Stop by the park office to obtain a trail map, which will help you find this and other trails in Cook Forest State Park. For more information contact the Cook Forest Vacation Bureau at (814) 752-2882



### Cook Forest Tower

(41° 19.254'N 79° 12.586'W)

The Cook Forest Tower was built in 1929 as both an attraction for sightseers and to help park rangers with fire detection. The site was chosen for its view of the Clarion River and Tom's Run valley, and because it was tall enough to be able to see over the 130 foot trees. The very top level of the tower is 1600 feet above sea level. The tower was retired from fire detection use in the 1950's but remains a popular attraction for tourists and locals alike. You can find the lane to the Cook Forest Tower along Route 36 in Cook Forest State Park.



### Forest Cathedral

(41° 19'25"N 79° 09'50"W)

This growth of towering white pines and hemlocks in Cook Forest State Park is listed as a National Natural Landmark. It is one of the highest concentrations of tall white pine in the Eastern United States. The trees in this area average between 200 to 350 years old, measure as much as five feet in diameter and reach nearly 200 feet tall. The Cathedral is reached via the Longfellow Trail behind the Visitors Center within Cook Forest, which can be found along Route 36 in Clarion County. The coordinates listed above are for Cook Forest State Park and not the cathedral specifically.



## On The Water

### Boating

#### Clarion River

The portion of the Clarion River that is best associated with the Clarion Area is the Piney Dam Reservoir. Piney Dam is a 690 acre reservoir on the Clarion River just outside Clarion. There is no horsepower limit on the reservoir, and pleasure boating and water skiing are the two most common recreational uses of the waterway. There are two boat launches that are considered part of the Piney Dam Reservoir:

#### Mill Creek Access

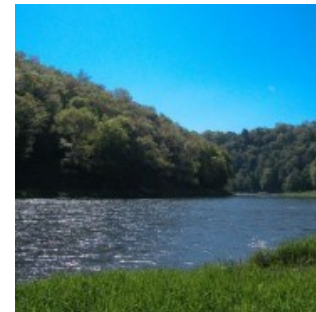
This access point is located near Strattanville, Pa within the slack water above Piney Dam, at the very upstream end of the Piney Dam Reservoir. The PA Fish & Boat Commission maintains this access. There is ample parking available, and all PFBC rules and regulations apply.

#### Toby Creek Access

Toby Creek Access is at the mid-point of the Piney Dam Reservoir at the mouth of Toby Creek, and can be found along State Route 68, just north of the courthouse in Clarion. At the bottom of the hill, just before crossing the bridge, turn right into the parking area for the Clarion Access to the Clarion River. The Clarion Marine Service and the Clarion borough provide a dock.

#### Clarion River Rambler

The "Rambler" provides tours of the Piney Dam Reservoir segment of the beautiful Clarion River aboard a 24 foot passenger pontoon boat. They can accommodate up to 12 passengers at a time, making it a great option for a group outing on the river. They are available 7 days per week during the boating season by reservation. For more information please visit their website at [www.clarionriverrambler.com](http://www.clarionriverrambler.com).



#### Kahle Lake

Kahle Lake is located on the border of Clarion county. Boating in Kahle Lake is limited to boats powered by electric motors and un-powered boats. There are 2 surfaced boat launches available with ample parking.



### Canoeing and Kayaking

#### Clarion River

The Clarion River provides excellent canoeing. The river is rated a beginner's class of C with an average downward flow of four miles per hour. The access areas in the boating section will also serve as launches for canoes and kayaks, along with those listed in this section.

#### Cook Forest State Park

The canoe accesses within Cook Forest offer a beachlike setting. There are two popular accesses within Cook Forest. The first is near the bridge along State Route 36 with parking available across the road at the state park office. The second is 4 miles upstream at the base of a bank with a beach access and parking across the road and among the trees.

#### Pale Whale Canoe Fleet

The Pale Whale has durable aluminum canoes and accessories available for rent to the public. They are the oldest and largest canoe livery in Cook Forest. There is ample parking, and clean restrooms and changing rooms are available. Each canoe will hold two adults and two small children or three adults. Paddle, life jackets, and transportation are all included in the price. Group rates are available for 8 canoes or more. They offer trips of 4, 10 or 15 miles, with overnight trips also available. For more information, visit their website at [www.canoecookforest.com](http://www.canoecookforest.com).





## Horseback Riding

Within Cook Forest State Park there are hundreds of miles of forest service roads that permit horseback riding. There are also a few trails on which horses are permitted. They include:

### Bridle Trail

This is a set of two trails totaling 4.1 miles. One trail starts at Tom's Run Road, joins with Browns Run Trail, and ends on Forest Road. This is a seldom traveled section of trail and a great area to watch for wildlife. Black bear and white-tailed deer have been spotted on this trail. The other trail starts on Forest Drive, loops onto the Old Logging Road trail, then ends on forest drive. Be careful and wear orange during hunting season, as both of these areas area open to hunting.



### Browns Run Trail

This is a 2.8 mile lightly traveled trail also open to hikers. It starts at Tom's Run Road and ends on Forest Road. As mentioned above, it intersects at the northern end with the Bridle Trail. This is a great trail for birding, and one of the best trails to listen for thrushes at dusk.

## Hunting

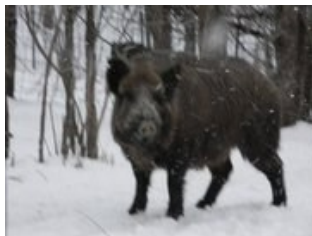
Clarion County is abundant with many species of wild game, and as such is a popular place for hunters to come for that chance at bagging the big buck or that trophy gobbler. Hunters in search of white-tailed deer, black bear, wild turkey, migratory game birds, as well as small game and fowl can enjoy several public hunting locations in the Clarion Area.

### Cook Forest State Park

About 7,000 acres of Cook Forest are open to hunting, trapping, and the training of dogs during the appropriate established seasons. Common game species are turkey, bear, deer and squirrel. Please consult the Pennsylvania Department of Conservation and Natural Resources or the Cook Forest State Park office for rules and details about hunting in Cook Forest.

### Double Boar Ranch

The Double Boar Ranch offers the finest in European wild boar hunting. They obtain most of their wild European swine as shoats and then grow them out in their growing facility to the size they desire for hunting, usually after about a year. They control the feed quality and animal health and can then choose the proper time for hunting. At Double Boar Ranch you will only encounter deer from 1-4 years old and ranging from 150-400 lbs. In addition they have several species of goats to hunt. For more information visit their website at [www.doubleboarranch.com](http://www.doubleboarranch.com).



### State Game Land 63

This game land is located to the west and south of Shippensburg, Pa. Parking can be found in several locations, with the easiest access being along Route 322. It contains over 3,000 acres of hilly terrain interspersed with food plots. The most prevalent game in this area are deer, bears, turkeys, and some stocked pheasant and grouse.

### State Game Land 72

This game land is located just north of Clarion and includes areas between Route 68 and Route 68, including most of Toby Creek. Parking can be found along Route 68 as well as just off Breniman Road. This game land contains over 2,000 acres of reclaimed strip mines with the primary species containing deer, bears, turkeys, grouse, and stocked pheasants.

### State Game Land 74

This game land is located just north of Strattanville, Pa. Parking can be found along Fisher Road. It contains almost 6,500 acres of wooded, mountainous terrain. Deer, bears, and turkeys are the primary species within this game land.

### State Game Land 283

This game land is located within Cook Forest State Park and surrounds the town of Cooksburg, Pa. It contains 7,500 acres of wooded, hilly terrain. The most prevalent species include deer, bears, turkeys and squirrels.

For more information about and maps for hunting in the above mentioned State Game Lands, please contact the Pennsylvania Game Commission.

### Foxburg Country Club (41° 19'25"N 079° 09'50"W)

Foxburg Golf Course has been in operation since 1887 and is currently the oldest golf course in continuous use in the entire US. The golf course isn't long, but the fairways are narrow, the roughs are deep, and the greens are small and fast. It is a USGA Member course and is open to the public from April 1 through October 31. The Foxburg Country Club and Golf Course are listed in the National Register of Historic Places. It can be found at 369 Harvey Road in Foxburg, Pa.



### Helen Furnace (41° 17.515'N 079° 19.288'W)

Helen Iron Furnace is in excellent condition. The area is very clean, maintained by the Clarion County Parks Department, and much of the furnace remains intact. It was built in 1845 and had its blowout in 1856. Helen Furnace produced 1,500 tons of iron per year during its operation and it's best actual net output was 1,000 tons. Helen Furnace can easily be found by traveling north on State route 1005 for approximately 5 miles where you will see signs for Helen Furnace Park.



### Henry Run Waterfall (41° 19.264'N 79° 13.652'W)

Henry Run Waterfall located along the North Country Trail and across from Hemlock Island. It is all that remains of a Clarion River logging area sawmill that operated in the same location. This waterfall is a very popular attraction of Cook Forest State Park because of the serenity of the area as well as the great view of the Clarion River and Hemlock Island that can be taken in from this area. For more information on this and other Clarion County sights along the North Country Trail you can visit their website at [www.northcountrytrail.org](http://www.northcountrytrail.org).



### Sarah Furnace (41° 00.417'N 79° 35.171'W)

Sarah Furnace was built in 1860 and named after the wife of the owner. It was abandoned in about 1867. Coal and slate operations have eliminated most traces of the furnace. However, large slag piles, a retaining wall, millrace and loose stones are still scattered about. To reach Sarah Furnace (near the village of the same name), take PA-68W from Clarion approximately 20 miles to State Route 3006 (you will see signs for Sarah Furnace). The coordinates listed above will take you near the furnace itself.



### Old Clarion County Jail

(see coordinates for Courthouse)

The first jail was a plain structure of square cut sandstone with a small yard surrounded by a stone wall in the rear portion. In 1847 the building was remodeled and a new front was added. Later when it became dilapidated and insecure it was torn down and the stones were used for the foundation of the courthouse. The building pictured here was completed in 1875, and although no longer housing prisoners, still stands today. It is located directly behind the current courthouse.



### Seneca Point Overlook

(41° 19.319'N 79° 12.703'W)

The Seneca Point Overlook is named after the Seneca Indians who lived in the area long before the first settlers came in the early 1820's. If you observe carefully, you can see petroglyphs and mortars left over from the time of the Seneca Indians on the top of the large rocks throughout the area. Standing at Seneca Point you have a majestic view, especially during the Autumn months, with the most prominent feature being the Clarion River. Keep your eyes open for bald eagles and ospreys. Access to Seneca Point can be obtained from Route 36 as you are traveling through Cook Forest State Park. While there, be sure to check out the Cook Forest Fire Tower near the Seneca Point site.



### St. Charles (Cocheo) Furnace

(41° 01.303'N 79° 23.316'W)

The St. Charles Furnace, a charcoal iron furnace, was originally called Cocheo Furnace. It was built in 1844-45 and was one of the largest stacks in Clarion County. The only furnace that employed raw coal, it was situated on Leatherwood Creek about 2 miles from the Low Grade Railroad. Its average production was around 1,500. It was mostly dismantled in 1865, and all that remains is a crumbling pile of stones, but it's still a site from history worth stopping to see. To get to St. Charles Furnace, take Route 861 from either Rimersburg or New Bethlehem and turn onto State Route 2007 (Curlsville Road).



### "The Big Cow"

(coordinates undetermined at this time)

Along the side of the road just south of Clarion on Route 68 is a large fiberglass cow known locally as "The Big Cow". The giant cow is located on the Vernon "Junior" Over farm and has been there since the mid 70's. It was set in place by the Over family as part of the opening of their farm operations. This statue can be found in many directions given by locals in such a manner as "if you go past the big cow you've gone too far" or "about 3 miles past the big cow and turn right" etc. To find the "big cow" from Clarion, simply travel south on Route 68W, and if you pass the big cow...well you get the picture.





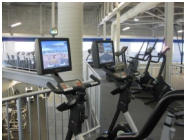
## *Fitness & Athletics*

### **Clarion County YMCA**



The Y is a 7,300 square foot, air conditioned facility with 40 circuit training machines and 32 cardio machines including elliptical, cross-trainers, stepper-climbers, treadmills, and upright and recumbent bikes. They also have a 1,300 square foot free weight room as well as hand weights, medicine balls, resistance bands/cables, parallel stability bars, balance and core training devices, and flexibility equipment. Located at 15952 Route 322, Suite 1 in Clarion, Pa. For more information call 814-764-3400

### **Clarion University Rec Center**



The University Rec Center features three full-sized multi-purpose gym courts that can be used for basketball, tennis, volleyball, soccer, etc., a four lane track, a complete cardiovascular area including personal viewing screens, a 4800 square foot weight room, a climbing wall, a meeting/game room and an aerobics room. Indoor and outdoor recreational equipment is available for checkout both within the facility and overnight.

Located on the Clarion University Campus - 814-393-1667

### **Mt. Joy Lanes**



Mt. Joy Lanes is a full-service bowling center with a pro shop and bowling supplies, welcoming both the casual bowler and league bowler alike. Monday and Tuesday evenings are for leagues, however open bowling is allowed. During the months of September-Early May, Mt. Joy is only open on Mondays and Tuesdays. Other Days are open under special reservation.

Located at 216 High Pt. Road in Knox, Pa. For more information call: 814-797-1155.

**Hours of Operation:** Sun CLOSED, Mon 7:00 PM to 10:00 PM, Tues 7:00 PM to 10:00 PM, Weds CLOSED, Thurs CLOSED, Fri 7:00 PM to 11:00 PM, Sat 7:00 PM to 11:30 PM

## *Museums, Galleries, & Theatres*

### **Allegheny Riverstone Center for the Arts**

ARCA is a non-profit group whose mission is to provide stimulating and enriching professional arts programs to the community. They hold their performances and programs at the Lincoln Theatre in Foxburg, Pa.

### **American Golf Hall of Fame**

The American Golf Hall of Fame is located on the second floor of the clubhouse at the Foxburg Country Club in Foxburg, Pa. It is comprised of three rooms containing early golf clubs and artifacts spanning more than three centuries.

### **Clarion Community Theatre**

Clarion Community Theatre is a group of people with a love for the theatre who come together to perform for the local public. They typically put on two shows per year, usually of the comedy genre. Their performances are usually held at the Verna Leith Sawmill Center for the Arts in Cook Forest, Pa.



### **Clarion County Historical Society**

The Clarion County Historical Society collects and preserves materials pertaining to the history of Clarion County. They also conduct workshops and exhibits at the Sutton-Ditz House Museum as well as encourage the use of the Ralph J. & Virginia Fulton Library. Tour The Sutton Ditz-House Museum, 18 Grant St., Clarion. Learn why we were called "The Iron County" and "The Horse Thief Capital of the Country"! Permanent exhibits include a Military Room, a General Store, rafting, ironmaking and glassmaking. The Sutton-Ditz House was built in 1850 and renovated in 1908, and is listed on the National Register of Historic Places. Visit the Fulton Library & Archives at 17 S 5th Ave., Clarion, to learn about family and local

history. The Fulton Library houses over 2500 volumes, historical documents, photos and maps. Hrs: Mon-Fri 10-4, open 10-7 on Wednesdays. Other times are by appointment only and special exhibits are announced in local newspapers and on their website. Call the Clarion County Historical Society at 814.226.4450 for information and schedule of changing exhibits & events.

### **Clarion University Theatre**

Clarion University offers undergraduate Bachelor of Arts and Bachelor of Fine Arts degrees. One of the activities student participate in is putting on live performances both for the students of the university as well as for the surrounding community. Their performances are held in many locations, including the Marwick Boyd Little Theatre on campus and at the Verna Leith Sawmill Theatre in Cook Forest, Pa. For tickets and show times visit [www.clarionuniversitytickets.com](http://www.clarionuniversitytickets.com).



### **Cook Forest State Park**

From deep within the Forest Cathedral to the majestic views at Seneca Point, the trails at Cook Forest explore diverse landscapes and habitats and offer a wide range of difficulties. There are 29 miles of trails within Cook Forest that explore old growth timber areas, wetlands, and many avenues for wildlife watching. Some of the Cook Forest trails include:

#### *Black Bear Trail*

This is a 1.1 mile easy hike. It's a flat loop that starts and ends at the Sawmill Center for the Arts. On this trail you can find bear marks on the American birch trees.

#### *Cook Trail*

This is a 2 mile moderate hike. The trail starts at River Cabin 12 and ends near the River Picnic Area near the mouth of Henry Run. It's a lightly used trail that runs through a magnificent stand of old growth timber that was selectively harvested in the mid-1800s. On this trail you can see tall eastern white pines, large eastern hemlocks, oaks, black gums, and American chestnuts that have been standing since the early 1920s.

#### *Liggett Trail*

This is a 1.1 mile easy hike. The trail starts at Forest Road, travels up Tom's Run, then circles back down to Tom's Run Road and back to where it started. The round trip distance is 2.2 miles. This is a great bird watching hike for all ages.



#### *Mohawk Trail*

This is a 2 mile difficult hike. It's a steep trail that starts at the intersection of PA-36 and Forest Road and ends back at PA-36 near Ridge Camp Campground. The hike takes you through an old growth forest of ancient hemlock, eastern white pine, chestnut oak, black gum and maple. Part of this area was hit by fire in the late 1880s, then a tornado in 1976, but still has some magnificent hemlock trees.

#### *River Trail*

This is a 1.7 mile difficult hike. This trail starts at the Fire Tower and ends on Fire Tower Road. It's a steep trail but one of the most beautiful hikes in early summer when the mountain laurel and great rhododendron are in bloom. It also has a long flat section that runs parallel to the Clarion River.

#### *Seneca Trail*

This is a .9 mile difficult hike. This is a steep trail that starts at the Clarion River PA-36 bridge and ends at the Fire Tower/Seneca Point area. It offers an excellent overlook view of the Clarion River through an old growth forest and felled trees from the 1976 tornado. One of the hemlocks along this trail was once documented as the tallest found in the Northeastern United States.

These are just a small sample of the trails available at Cook Forest. Stop by the park office for a map of all of the hiking trails.

### **North Country Scenic Trail**

The North Country Trail features majestic old growth forests, the Wild & Scenic Clarion River, multiple opportunities for wildlife viewing, and a taste of rural Pennsylvania. The Clarion portion begins at the southern boundary of the Allegheny National Forest and passes through Cook Forest State Park via the Baker Trail.





## Geocaching

For readers who don't already know, geocaching is a real-world outdoor treasure hunting game, enjoyed all around the world. Players try to locate hidden containers of all sizes, called geocaches, using GPS-enabled devices and then sharing their experiences online with other geocachers. Clarion County is a great place for geocaching. At the time of this writing, there are currently 1,124 geocaches within 25 miles of Clarion. Many of the places to see and things to do in this book are located within a few miles or even a few feet of a geocache. For more information on geocaching visit [www.geocaching.com](http://www.geocaching.com). Once there, to find geocaches specific to the Clarion area, use the following zip codes in your search: 16214, 16254, 16232, 16248, 16255, 16258, 16326, and 16036.

## Golfing



### Clarion Oaks Golf Club

Clarion Oaks features two unique versions of championship golf. The front nine meanders through a towering oak forest and takes advantage of the area's natural terrain, providing a traditional appearance. The back nine is known for its lack of trees, menacing winds, wide rolling fairways, and extremely large greens, making it reminiscent of a British Open links course. Clarion Oaks was built in 1968 and has undergone a series of improvements keeping the grounds and clubhouse modern while maintaining the traditional feel. Located just off I-80 at Exit 62, Clarion Oaks is an 18-hole, Par 72 course with a total course length of 6,280 yards. A pro shop as well as food and bar are available on the golf course grounds.



### Hi-Level Golf Course

Hi-Level was the first public 18-hole golf course in Clarion County. It was constructed on the site of Fern City, an oil boom town in the late 1800s. A family-owned golf course, Hi-Level opened in 1968 and has recently entered its third generation of ownership. The course is laid out with the front nine featuring a par 33 with six par fours and three par threes. The back nine features a pair of holes with a considerable degree of difficulty. Hole 11 is 625 yards with a dog-leg to the left. Hole 16 is a tricky 670-yard par 6 with a water hazard and several tall trees. In total, Hi-Level is a Par 72 course with a total course length of 5,692 yards. A pro shop, driving range, and a pavilion for golf outings are all available on the course grounds as well as golf lessons and club rentals.



### Timberwolf Golf Course

Timberwolf Golf Course is a 9-hole, golf course with club and cart rentals, chipping range and 18-holes of mini-golf located at Wolf's Camping Resort near Knox, Pa. Along with the golf course, Wolf's Camping Resort has a wide range of activities for all ages including a large, clean, heated outdoor pool and hot tub, a 9-acre fishing lake, and more. Wolf's Camping Resort offers lodging rentals for as long as you wish. Tent sites and camper sites are available, as well as on-site cabins. Each of the cabins offers an air conditioner, electric heater, washer and dryer. The resort hosts a variety of special events and also rents paddle boats and rowboats to enjoy on the lake.

## Hiking Trails

### Baker Trail



This trail was established in 1950 and originally stretched from Aspinwall, Pa to Cook Forest. It was originally 133 miles long. Due to extensive development along the Allegheny River, the Aspinwall-Freeport section had to be abandoned, so the trail now begins in Freeport. Later, in 1971, the northern part of the trail was extended from the Fire Tower in Cook Forest where it once ended and now continues into the Allegheny National Forest. The current length of the Baker Trail is 141 miles long. There are primitive campsites available along the trail for those who wish to attempt to hike the entire trail, as this is a multiple-day journey.

### Beaver Creek Nature Area

This is a popular area for not only hiking, but also for photography, bird watching and fishing. Beaver Creek contains 850 acres of lakes, wetlands and meadows. The lakes are stocked with largemouth bass and bluegill for regulated fishing. There have been over 150 species of birds and waterfowl identified to have visited and nested here. The hiking trail here is great for families, especially for children. It's designed for interpreting and viewing nature. The trail surface is gravel and limestone, and the total trail length is about a tenth of a mile.

### Cook Forest Sawmill Center for the Arts

The purpose of the Cook Forest Sawmill Center for the Arts is to promote and preserve traditional arts and crafts. They hold classes and host festivals and theatre performances. Several community theatre groups as well as the Clarion University Theatre group put on plays, musicals, and performances throughout the year. The Sawmill is located within Cook Forest State Park.

### Hazel Sanford Art Gallery at Clarion University

The University Art Gallery at Clarion University offers a variety of exhibitions throughout the year, showcasing both student and professional work. The gallery is located within Carlson Library at Clarion University and can be contacted by calling 800-672-7171.

# Outdoor Recreation

## Biking

### Allegheny River Trail



The Allegheny River Trail has a wide, paved pathway and runs adjacent to an equestrian trail. This 32-mile trail follows a segment of the Allegheny River that is part of the National Wild and Scenic Rivers System. You can access the Allegheny River Trail from downtown Foxburg, Pa.

### Armstrong Trail



The Armstrong Trails varies from rough terrain to smooth asphalt and accommodates cyclists, pedestrians, inline skaters, and equestrians. You will find many opportunities to photograph the scenery along the Allegheny River. In the winter months, this trail is enjoyed by cross-country skiers. You can access the Armstrong Trail from Verner Street in East Brady, Pa.

### Clarion Highlands Trail



The Clarion Highlands Trail is one of the highest rail trails in Pennsylvania. It passes over the divide between the Clarion and Allegheny Rivers and follows the Old Clarion Secondary Rail Corridor. It's highest point is near Elmo, Pa at 1,472 feet above sea level. The trail varies from 40 to 200 feet wide. Access to this trail can be found just off Station Road in Shippensburg, Pa.

### Cook Forest State Park

Cyclists looking for a great location to ride can find it within Cook Forest State Park. Biking is permitted on all one-way dirt roads within the park and offers breathtaking scenery, peaceful rides, and fantastic glimpses of nature.

## Bird Watching

### Allegheny River at Foxburg

For a chance at spotting an eagle in Clarion County, one of the best spots is along the Allegheny River in Foxburg, Pa. Many types of eagles and falcons have been spotted in this area, including the peregrine falcon, grand golden eagle and the majestic bald eagle.

### Cook Forest State Park

The Forest Cathedral mentioned earlier is a spectacular location for spotting some pretty unique birding opportunities. Be sure to stop by the park office for a map of the trails. Head out Seneca Trail for another wonderful birding opportunity. Also spend some time along the Clarion River on River Road as well as along Tom's Run Road for opportunities to see nuthatches, thrushes, warblers, juncos, vireos, parulas, and more.

### Kahle Lake

Just outside of Knox, Pa is a wonderful place to watch for birds. You will mainly find water birds of many species including swans, geese, ducks, and loons of all types. But if you keep your eyes open and your binoculars on hand, you may spot a hawk or eagle from time to time.

### Piney Tract (Mt. Zion Grasslands)

This is a spectacular area for watching birds. Walk the grasslands and the old strip mine sites near Sligo, Pa to find a wide variety of bird types. Find grassland birds such as sparrows and owls, larks and sandpipers, and more. To get there, take I-80 west from Clarion to the Knox exit. Turn left and follow Canoe Ripple Road across the Clarion River until you take the first left onto Elliott Road to the where the dirt road opens up into a grassland area.

